

- #1 Sketch up
- #2-3
- #4
- #5

an exceedingly rare technique for Rembrandt. Looking at the broad liquid brushstrokes in the lower part of the sheet with Western twenty-first-century eyes, it is hard not to think, at least for a moment, of the finest works one knows by Chinese and Japanese calligraphers or by superior abstract expressionists that give the impression of absolute spontaneity but that are, of course, completely controlled. Seymour Slive, *The Drawings of Rembrandt: A New Study*, Thames and Hudson, 2009, pp.73- 74.

Sketchup

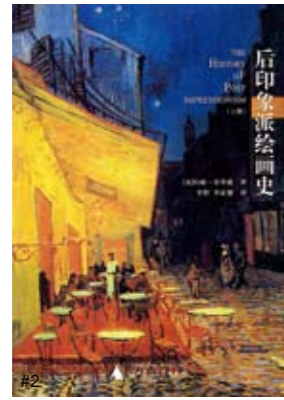
expressive form

significant and

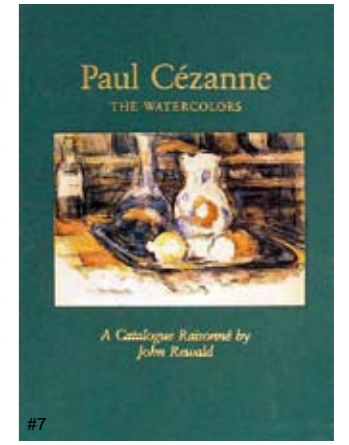
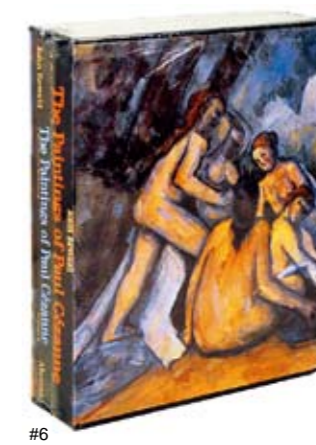
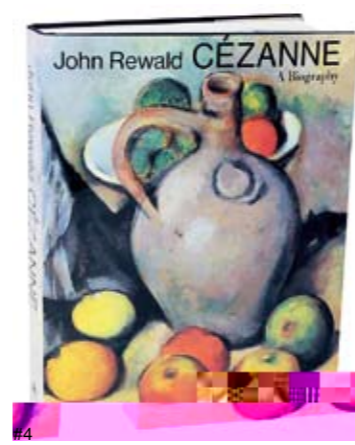
1910

1914

significant form



- #1
- #2
- #3
- #4
- #5
- #6
- #7



1910 1912

Abrams

2010

1984

1997

